

Preparations

Warning!

Charge the GoodTalk Case only with a 1A current charger. With a higher current the device will be damaged and this will void the warranty.

Step 1: Remove PIN

Does your SIM card has a PIN? Remove the PIN from the SIM card in your mobile phone.

Step 2: Nano SIM card

Make sure your SIM card has the size of a Nano SIM card. If it is a normal SIM card you need to make it smaller with a nano SIM card cutter or order this size via your Telecom provider.

Step 3: Internet connection

The first time you use the adapter, you need an internet connection. This can be either Wi-Fi or mobile data from your carrier.

Setup

Step 4 Install GoodTalk App on iOS device

Go to the App Store and search for “goodtalk”, or simply scan the QR code below.



Step 5: Insert SIM card & Power on

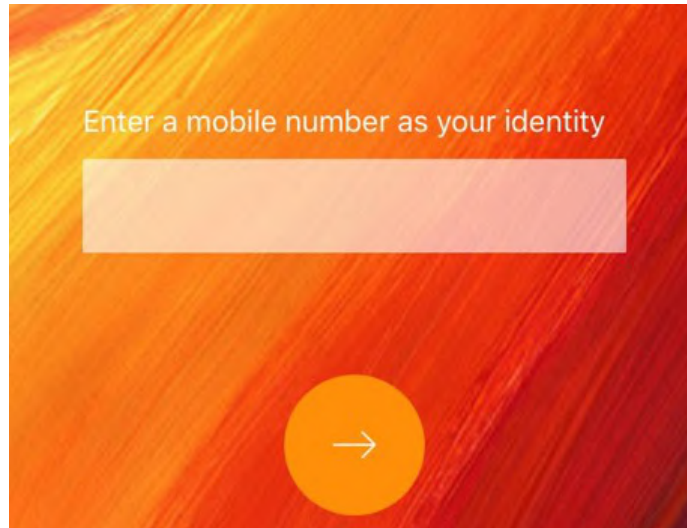
Insert the SIM card into the GoodTalk Case. Press the power for 2 seconds to switch it on. The LED on the top will light up green for 3 seconds, then a red blink. (When switching off the device, the LED will light up blue for 2 seconds, then green for 3 seconds).

Step 6: Bluetooth

Put on the Bluetooth of your mobile. In the menu of your mobile : Settings - Bluetooth. (Pairing with Bluetooth is not done in this menu, but in the GoodTalk App.)

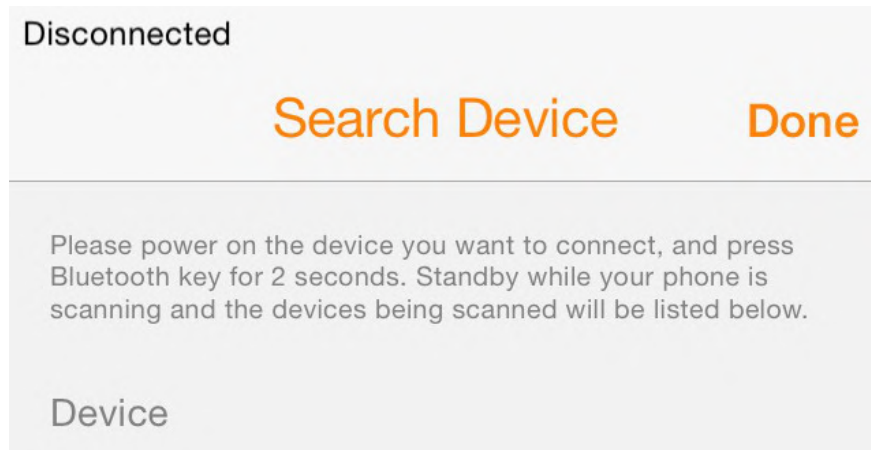
Step 7: Launch GoodTalk App

Launch the App, click “Allow” to permit the authorizations. Input a phone number as your account. Then you are led to a Bluetooth search page.



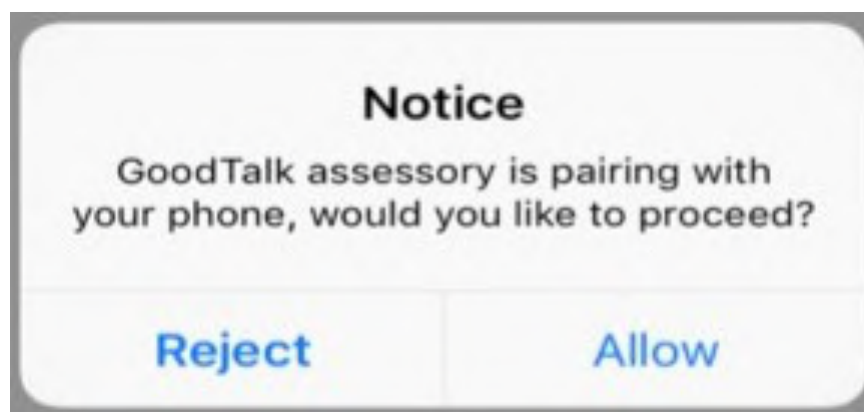
Step 8: Pairing Device

Now pair your GoodTalk Case with your mobile phone. In the GoodTalk App, go to Apps (Settings) - scroll down - go to ‘Search Device’. Pull down the screen to refresh the scanned devices. Now your phone is looking for Bluetooth signals.



Step 9: Connect

While you pull down the screen in the previous step, press the power switch for 1 second to pair the device. When you see your GoodTalk Case in the App, press it to connect. Click “Allow” to proceed.



Step 10: Notifications

- To maximize the use of the GoodTalk App you need to allow the App access to the features of your mobile.
- Go to Settings in your iPhone, scroll down to the GoodTalk App. Allow access to all shown options.
- Go to 'Notifications' as well, scroll down to the GoodTalk App and allow all the shown options.
- Go to Settings in your iPhone, go to 'Privacy' and put on the 'Location Services'. Scroll down to the GoodTalk App and allow "always" location access. This is also needed for a stable Bluetooth connection. (If needed to save power, switch off "Privacy", as long as "always" stays on.)

You can now use your GoodTalk Case !

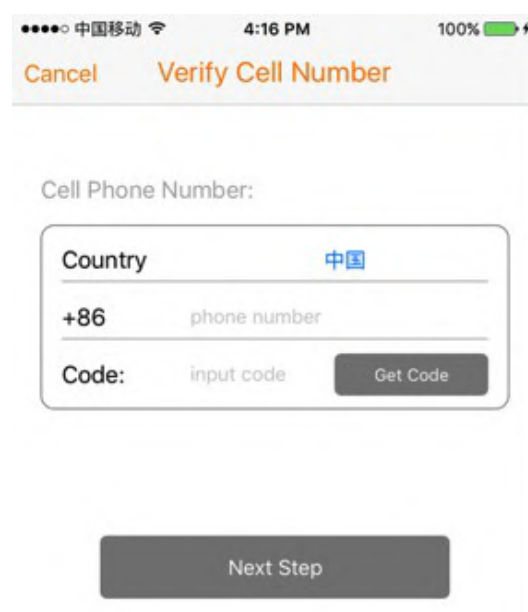
Cloud Service

Didn't bring your GoodTalk Case with you or lost connection? With Cloud Service your messages and numbers of your incoming calls will be forwarded to you.

Setup

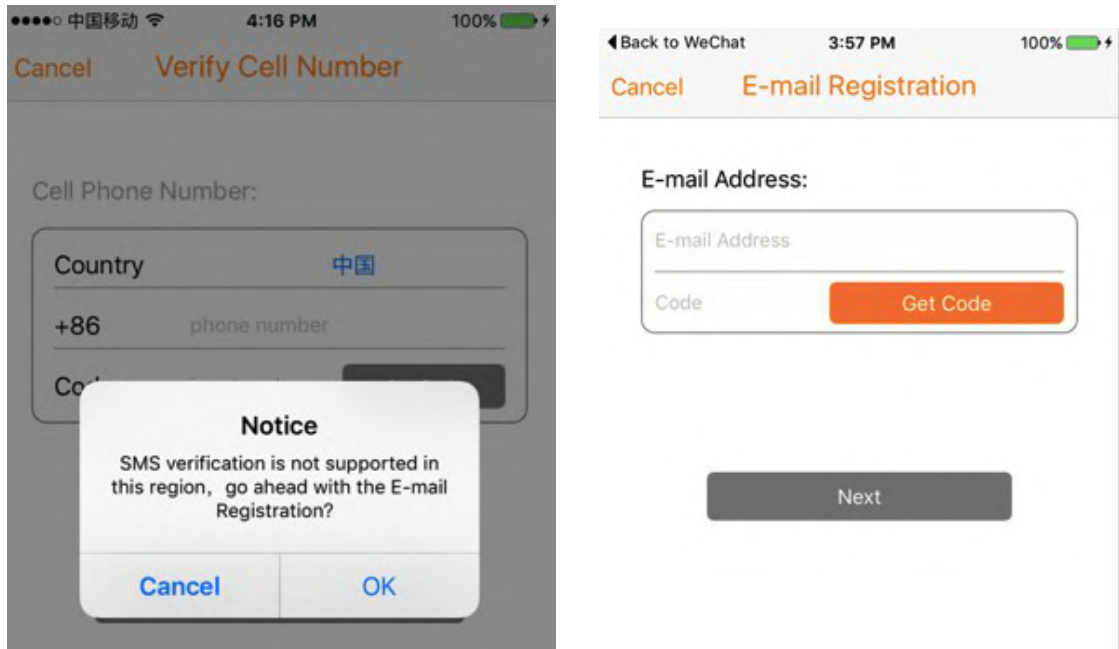
Step 1: Input number

In your GoodTalk app go to Apps (Settings) - My Account. If you are an user outside China, please click the blue characters “[中国](#)” to choose your country.



Step 2: E-mail verification

After chosen your country, you get the notice below. Click “Ok”.



Then input your e-mail. Click “Get Code”. Then check your e-mail box, get the verification code. Type the code here, and then click “Next”.

Now you have successfully enabled a cloud service.

Overview

GoodTalk Case is the enhanced iOS GoodTalk device, which can provide iPhone dual SIM function, or introduce voice/text function to any iOS devices.

No need to do any boring prison-break things. By just installing a GoodTalk app from App Store, your iOS device will have this new ability now.

GoodTalk Case supports iOS 7.1 and any upper versions. It is now ready to use with your latest iPhone. It utilizes Bluetooth low energy 4.0 standard. This means you may not use it with few older iOS product models, please check “iOS Product Compatibility” for details.

iOS Product Compatibility

Supported Cards	Nano SIM card
Supported System	iOS 7.1 and upper version
iPhone	SE,6S/6/6plus, 5s, 5c, 5
iPad	3, 4, Air, Air2, Mini 1/2/3
iPod	Touch 5/6

Key Functions

Power On	Press power key for 2 seconds
Power Off	Press power key for 4 seconds
Pairing/ When Disconnected	Press power key once to reset the Bluetooth and pairing again
Standby Condition	Press once to beep the phone

LEDs

Power On	Green LED for 3 seconds, ends with a red blink	Power Off	Blue LED for 2 seconds, then green LED for 3 seconds
Not connected	Blue LED blinks slowly	Press once (pairing/standby)	Blue LED
No SIM	Green LED blinks quickly	No GSM Service	Green LED blinks slowly
Incoming call	Green LED on	Outgoing call	Green LED on
Charging (power on)	Red LED on	Charging (power off)	Green LED on
Charging Completed	Blue LED on	Low battery	Red LED blinks slowly

Product Specifications

Weight	30 grams
Dimensions	47mm x 47mm x 8.7mm
Frequencies	GSM900/EGSM/DCS1800/PCS1900
Connectors	1 Micro-USB 1 Nano-SIM
Battery	Battery Capacity: 400mAh Standby: 120hours, Talk: 3 hours.
Power	5V, 500ma~1A
Accessories	1 Micro-USB charge cable 1 Retrieve card pin 1 Quick Start Guide

Safety Warning

- Put the device in a place where children can't grab it. The device is not for children under 14 years old.
- Opening the Device will void the warranty.
- Using a charger with a current of more than 1A will void the warranty.
- Do not use the device near magnetic material or in the situation of electromagnetic interference.
- This is not a waterproof product. Do not use it in a wet or humid environment.

Warranty

This product has a limited warranty, as is defined in the RPC associated consumer regulations. This warranty complies with the corresponding regulations about repair, replacement and refund. For warranties outside the RPC please consult the distributor per country.

About Us

Appincloud Ltd.

Room 312, Building A, Kejiyuan, 135 Xingangxi Road, SYSU,
Guangzhou, China

E-mail: support@appincloud.cn

Website: <http://www.appincloud.cn>

WeChat: [appincloud](#)



Distributor

Ivano Phone Accessories

Boerhaavelaan 57, NL-3552 CW Utrecht, The Netherlands

Website: <https://ivanoworld.com>

Version 3.0 by Ivano